

A scenic view of the Berkeley campus at sunset. The sun is low on the right horizon, casting a warm golden glow over the city. In the center, the Sather Tower (Sather Gate) stands out against the hazy background. The foreground is filled with dense green trees and tall, dry, golden-brown grass. The sky transitions from a deep blue at the top to a soft orange near the horizon.

Berkeley Social Welfare

Admission to Graduate Study

Fall 2021 Admission Virtual Information Session

- Welcome, Introductions & Session Overview
- About Berkeley's MSW Programs
- Admission Eligibility Requirements
- Application Requirements & Process
- Financial Assistance

It's all online:

<https://socialwelfare.berkeley.edu/admissions>

<https://grad.berkeley.edu/admissions/apply/>

"America needs us now
more than ever."

Dean Linda Burton

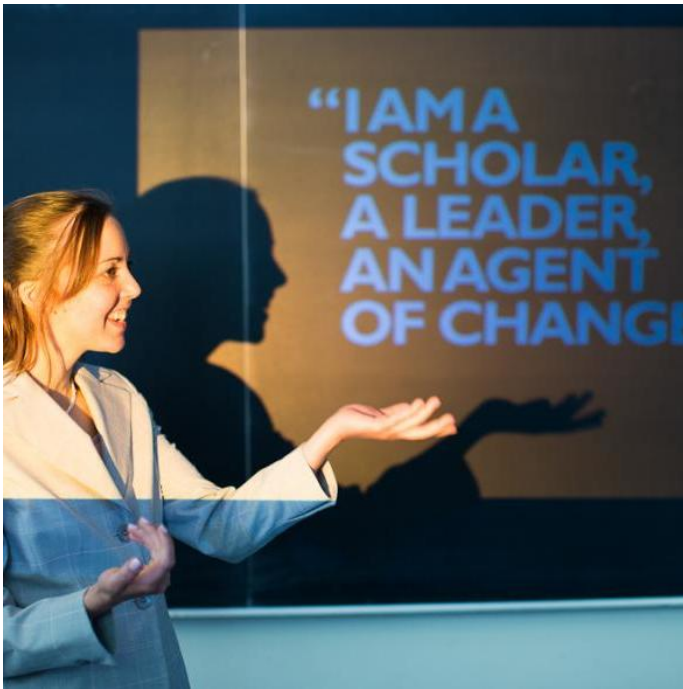


Berkeley Social Welfare

- API Caucus
- Black Caucus
- Check Yourself
- Dean's Advisory Board
- Latinx Caucus
- LGBTQ*
- NASW-CA Lobby Days
- Social Justice Symposium
- Social Welfare Graduate Assembly

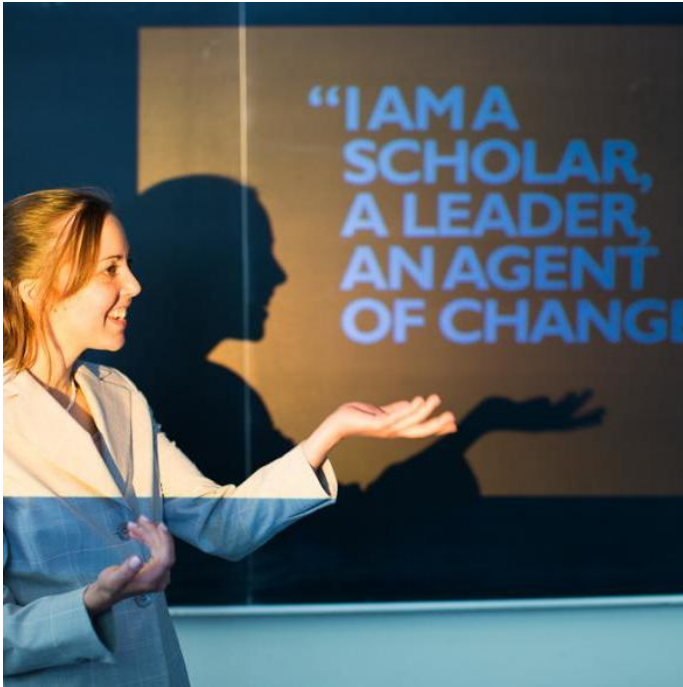


Berkeley Social Welfare



- Full-time MSW
- FlexMSW – Advanced Standing
- FlexMSW – Extended (part-time)
- Social Welfare & Law (MSW/JD)
- Social Welfare & Public Health (MSW/MPH)
- Social Welfare & Public Policy (MSW/MPP)
- Combined MSW/PhD

Berkeley Social Welfare



- Child Welfare Scholars
- Graduate Certificate in Aging
- Latinx Center of Excellence ("LCOE")
- School Social Work Credentials (aka "PPSC")
- Social Work with Latinos Certificate

Berkeley Social Welfare

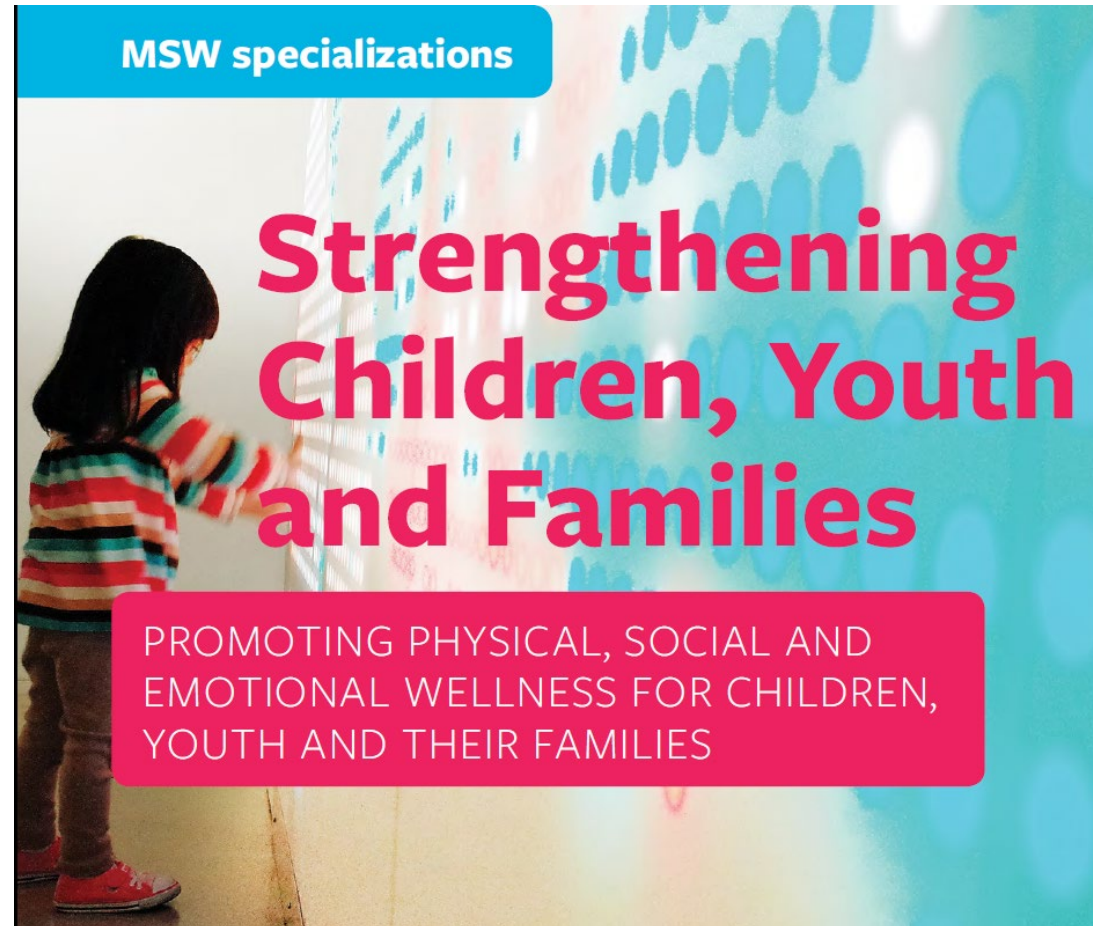
- Addiction Treatment Specialist
- Aging Specialist
- Behavioral Health Care Coordinator
- Clinical Social Worker
- Community Mental Health Educator
- Geriatric Care Manager
- Hospice Social Worker
- Medical Social Worker
- Mental Health Therapist
- Patient Navigator
- Social Service Program Manager/Director
- Wellness Manager

MSW specializations

Advancing Health and Well-being Across the Adult Lifespan

PROMOTING PHYSICAL, MENTAL AND BEHAVIORAL HEALTH FOR ALL ADULTS.

- Adoption Specialist
- Child Welfare Social Worker
- Clinical Social Worker
- Early Intervention Specialist
- Family Assessment Social Worker
- Family Support Specialist
- Foster Care Social Worker
- Juvenile Officer
- School Social Worker
- Youth Advocate
- Youth Services Specialist



"SCYF"

- Advocate
- Agency Director
- Budget Manager
- Community Educator
- Community Organizer
- Employment Development Specialist
- Grant Writer
- Human Services Specialist
- Policy Advocate/Analyst
- Planner
- Program Evaluator
- Program Manager
- Public Health Administrator
- Quality Assurance Manager
- Research Analyst
- Trainer

MSW specializations

Strengthening Organizations and Communities

PROMOTING SOCIAL JUSTICE THROUGH PROGRAM DEVELOPMENT, IMPLEMENTATION, EVALUATION, COMMUNITY ORGANIZING, AND POLICY PRACTICE.

"SOC"



A sample of agencies providing field placements in the Bay Area:

Administrative Office of the Courts
Alameda County Behavioral Health Care
Alameda County Family Justice Center
Alternative Family Services
Alzheimer's Services of the East Bay
Asian & Pacific Islander Wellness Center
Bay Area Community Services
Berkeley Mental Health
Berkeley Unified School District
Boys & Girls Clubs of San Francisco
Casey Family Programs
East Bay Agency for Children
East Bay Children's Law Office
Family Caregiver Alliance
Family Service Agency of San Francisco
Fred Finch Youth Center
Glide Community Housing
Hospice by the Bay
Huckleberry Youth Programs

Institute on Aging
Kaiser Permanente
La Clinica de la Raza
Larkin Street Youth Services
Marin County Community Mental Health
On Lok Senior Health
Rainbow Community Center
Richmond Area Multi Services, Inc.
San Francisco Department of Public Health
San Francisco General Hospital
San Francisco Human Services Agency
San Francisco Unified School District
Seneca Family of Agencies
UCSF Benioff Children's Hospitals
University Health Services
VA Palo Alto Healthcare System
Youth Engagement Advocacy Housing (YEAH)

FlexMSW Options

- Designed for working professionals seeking the MSW
- Advanced Standing = 1 year (must have BSW)*
- Extended = 3 years part-time
- Same MSW eligibility criteria,* application timeline and admission process

FlexMSW Options

- Priority access to classes in evenings or on weekend
- Summer term(s) required
- Limitations on coursework and other program options (certificate programs, concurrent degrees)
- Employment/employer support = primary financial aid

MSW Specialization Areas	Full-time MSW	FlexMSW Advanced Standing	FlexMSW Extended	Full-time Concurrent MSW/MPH	Full-time Concurrent MSW/MPP
Advancing Health and Wellbeing across the Adult Lifespan (“A-WELL”)	●		●	●	
Strengthening Children, Youth and Families (“SCYF”)	●	●	●	●	
Strengthening Organizations and Communities (“SOC”)	●		●	●	●
Program Options	Full-time MSW	FlexMSW Advanced Standing	FlexMSW Extended	Full-time Concurrent MSW/MPH	Full-time Concurrent MSW/MPP
Elective Courses in Other Departments	●			●	●
Graduate Certificate in Aging	●		●	●	●
School Social Work Credentials (PPSC)	●		●	●	●
Social Work with Latinos Certificate	●		●	●	●

MSW Admission

- Fall only – no summer or spring admissions
- Can apply to only one program option
- Choose specialization at time of application
- Apply online: <https://grad.berkeley.edu/admissions/apply/>
- Application opens September 15

“What are you looking for?”

- Most promising students
- Professional commitment to social work
- World view characterized by humanistic values
- Critical and analytical perspective
- Sensitivity to diversity and social justice
- Competence in writing
- Professional/scholarly promise and leadership potential
- Diverse student body

“How many get admitted?”

Fall 2020 Entry	Applied	Admitted	Accepted Offer
MSW	393	117	89
Flex Advanced Standing	17	11	6
Flex Extended	39	22	20
MSW-MPH	29	5	3
MSW-MPP	10	1	1
PhD & MSW/PhD	54	7	4

Admission Eligibility

- Bachelor's degree
 - Accredited professional degree ("BSW") for FlexMSW-Advanced Standing
- 3.0 GPA in upper-division coursework
- Sufficient preparation for graduate study in social welfare
- Broad liberal arts education: history; philosophy; behavioral and social sciences; humanities; etc.
- Introductory college-level course in statistics

“Do I have to take the GRE?”

Program Applying To:	GRE Required?
MSW (any degree track)	NO
Concurrent MSW/MPH	Optional for Fall '21
Concurrent MSW/MPP	No
Concurrent MSW/JD	LSAT or GRE
PhD & Combined MSW/PhD	No

Admission Eligibility: Professional Experience

- At least one year (2,100 hours), paid or volunteer
- Two years for MSW SOC specialization
- Work with/on behalf of underserved, vulnerable
- Accurately reflected in résumé!!!

Admission Eligibility: English Proficiency

- TOEFL or IELTS required for applicants from countries in which the official language is not English
- **Exception:** at least one year of full-time academic course work with grades of B or better in residence at a recognized U.S. institution

Application Requirements

- Online application (create account, submit when ready)
- Application fee:
 - \$120 US Citizen/Permanent Resident
 - \$140 all others
- **DEADLINE:** Dec. 1 at 8:59 pm Pacific Time

Application Requirements

- Transcripts
- Letters of Recommendation
- Written Statements
- Résumé/CV
- Test scores, if applicable

Application Requirements

- Supplemental materials (CWS; LCOE – see website)
- Re-applicants
- General rule: If not required, don't include it

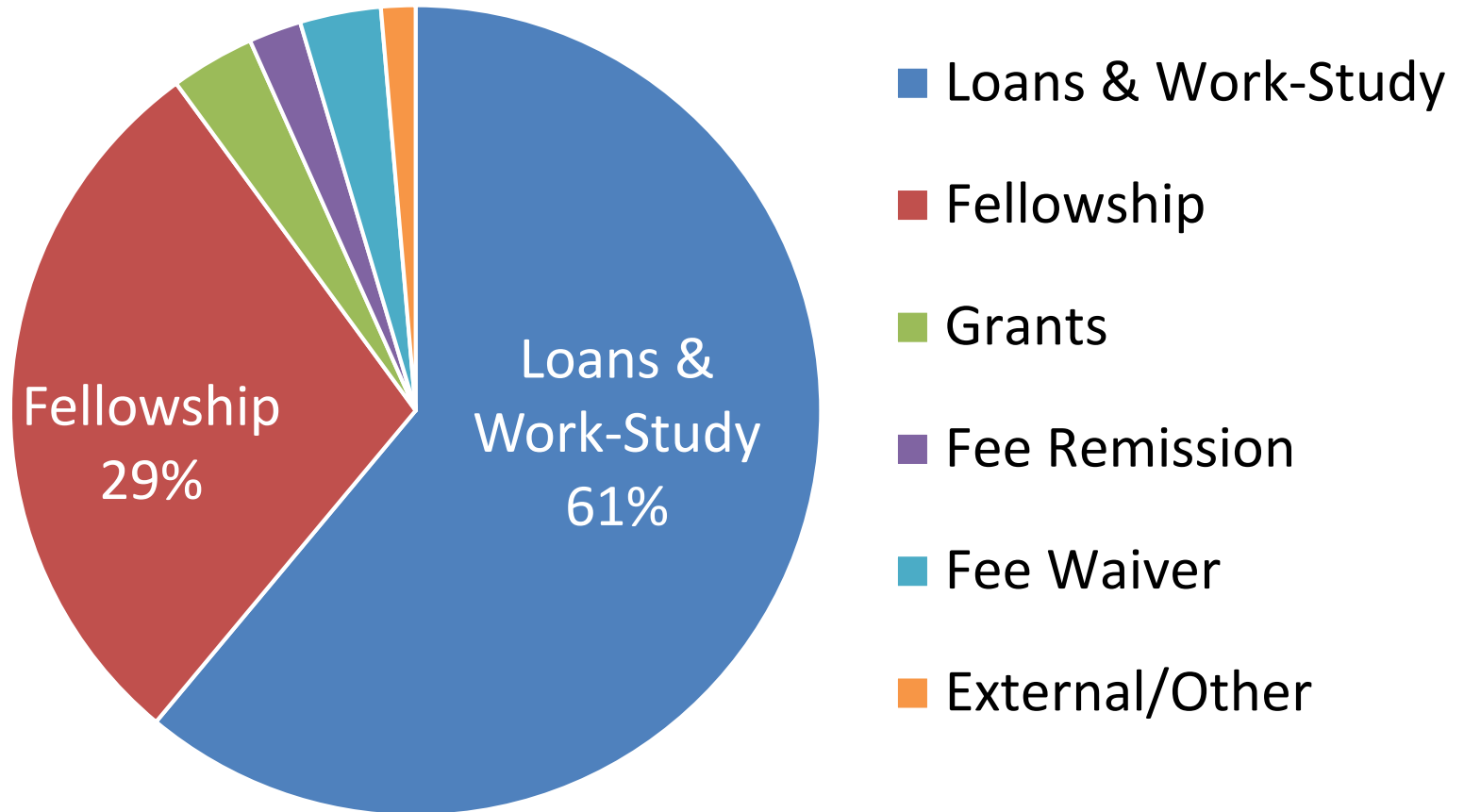
Financial Assistance

- Understand costs and budget
- Plan ahead
- Expand and diversify resources
- Manage finances effectively

Financial Assistance

- Academic Student Employment
- Department & University Fellowships
- External Fellowships & Awards
- Grants
- Field-based Stipend Programs
- Professional Development Awards (conference travel)
- Student Loan & Loan Forgiveness Programs
- Employer Support

MSW Financial Assistance





- Be clear about your goals
- Do your homework
- Plan ahead
- Read and follow instructions
- Don't wait to last minute to click "Submit" !!!

It's all online



Email: swadm@berkeley.edu

Questions?